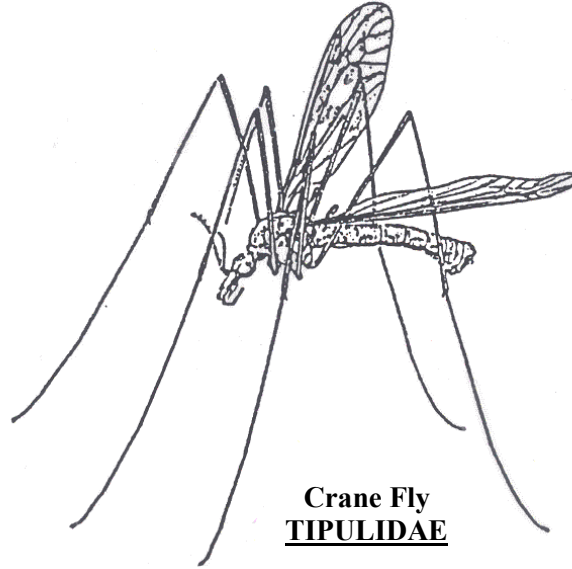


CRANE FLIES



Residents of Marin and Sonoma counties are currently being troubled by "Mosquito-like" insects called crane flies. These non-biting insects do not constitute a public health problem but create an annoyance when found in large numbers.

Although crane fly adults closely resemble mosquitoes in size and appearance, they can be distinguished from mosquitoes by the absence of biting mouth parts (mosquitoes have biting mouth parts or a beak).

Their slender bodies, ranging in size from 1/8 -1 3/4 inches in length depending on the species, are supported by long fragile legs that easily separate from the body when captured. Color ranges from gray to reddish brown.

The adults may appear as weak flying insects, active especially at night when they are attracted into lighted homes. During the day they are occasionally found resting on shrubbery, eaves, walls and entrance ways into homes. They are not abundant most years and when favorable wet seasons occur, one can anticipate their presence in large numbers during the late winter and early spring months.

CONTROL

Because crane flies are not a public health problem nor generally a serious nuisance, control is usually not warranted. If or when crane flies become abundant outside your home, their entrance can be discouraged by closing doors and screening windows.

MARIN/SONOMA
MOSQUITO AND VECTOR CONTROL DISTRICT
595 Helman Lane
Cotati, CA. 94931
1-800-231-3236
www.msquito.com